

WIZARD

Water Heating. Redefined.

Futuristic Design

Intelligent Control

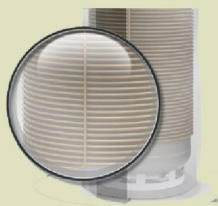
Corrosion Resistant



HEAT PUMP
Air Source



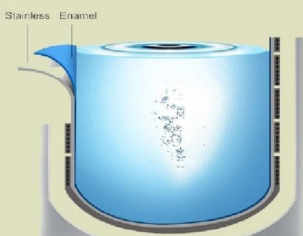
Intelligent Touch
Digital Control



Outside Coil



Special foam insulation
for Noise Reduction



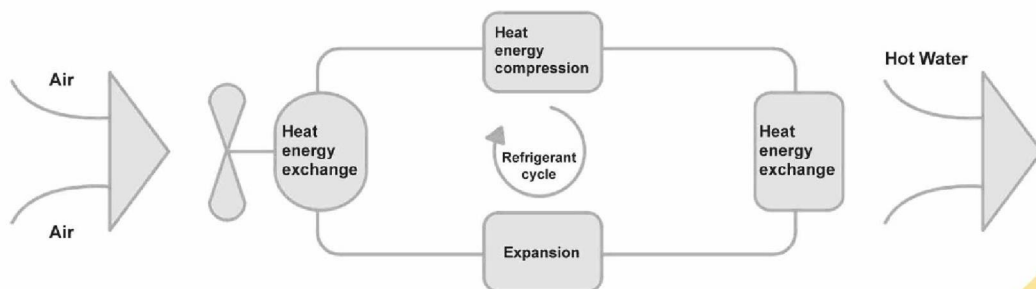
Enamel Coated Tank

Harnessing heat from our atmosphere, the heat pump is able to produce hot water, and in the process, discharge cool air out.

The ingenious operating principle of the heat pump allows it to function, regardless of weather or time of day.

High performance compressor enables recovery of hot water in a shorter time.

Built-in digital user interface allows instant reading of tank temperature, and easy operation of heat pump.

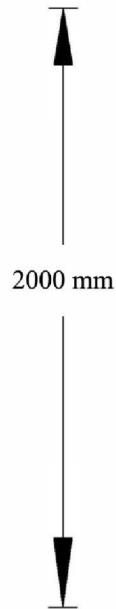


WIZARD

Water Heating. Redefined.

Air to Water Integrated Heat Pump Hot Water System

Installation space requirements:



Model	WI-300R
Rated Input Power	0.8kW
Rated Heating Capacity	2.5kW
Rated Current	4.0A
Power Supply	220V ~ 240V / 50Hz
Outlet Water Temperature	60 degreesC (Default 55 degreesC)
Water Output Capacity	70L/H
Capacity of Water Tank	300L
Electric Heater Power	2kW
Auxiliary Heater Ampere	9.1A
Electric Boosted Capacity	41L/H
Refrigerant	R134a
Compressor	Hitachi
Condensor	Aluminium Coil (External)
Evaporator	High Efficiency Finned Heat Exchanger
Size (mm)	φ 660 x 1835
Net Weight (Kg)	140
Noise (dB)	45
Water Connection	DN20

Authorised Dealer



Blk 2 Balestier Road

#01-695,

Singapore 320002

Tel: 6846 4774, Fax: 6846 4334

Email: enquiry@aumada.com.sg

Website: www.aumada.com.sg



In our continuous effort towards product improvement, **WIZARD** reserves the right to implement changes without notice.